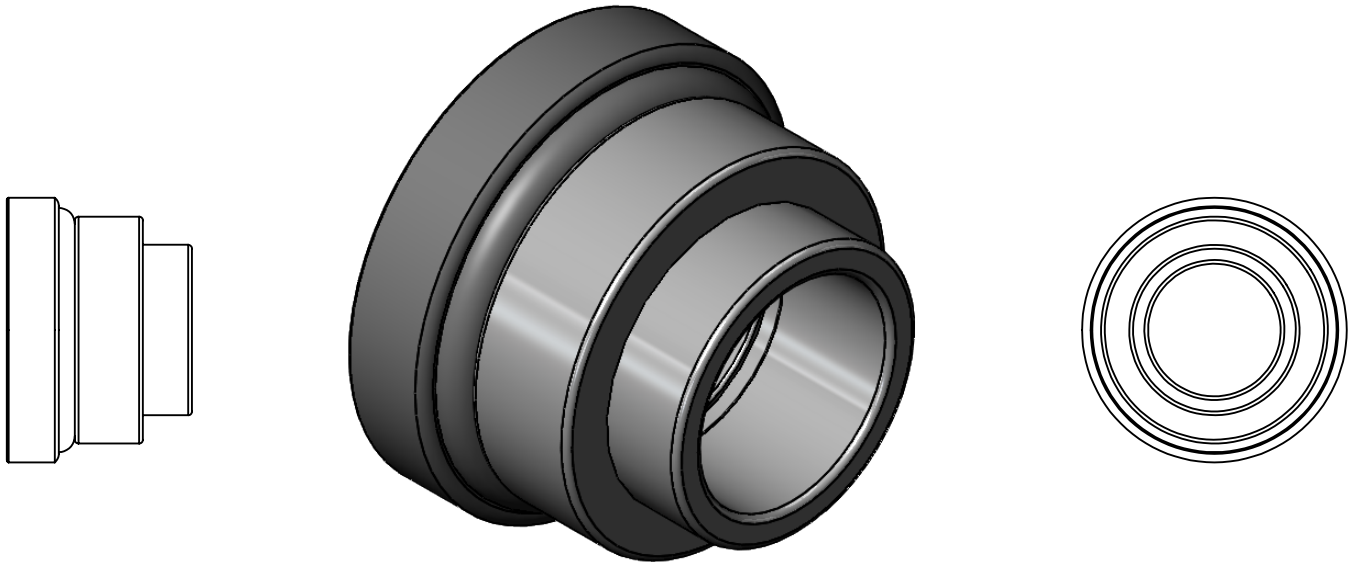
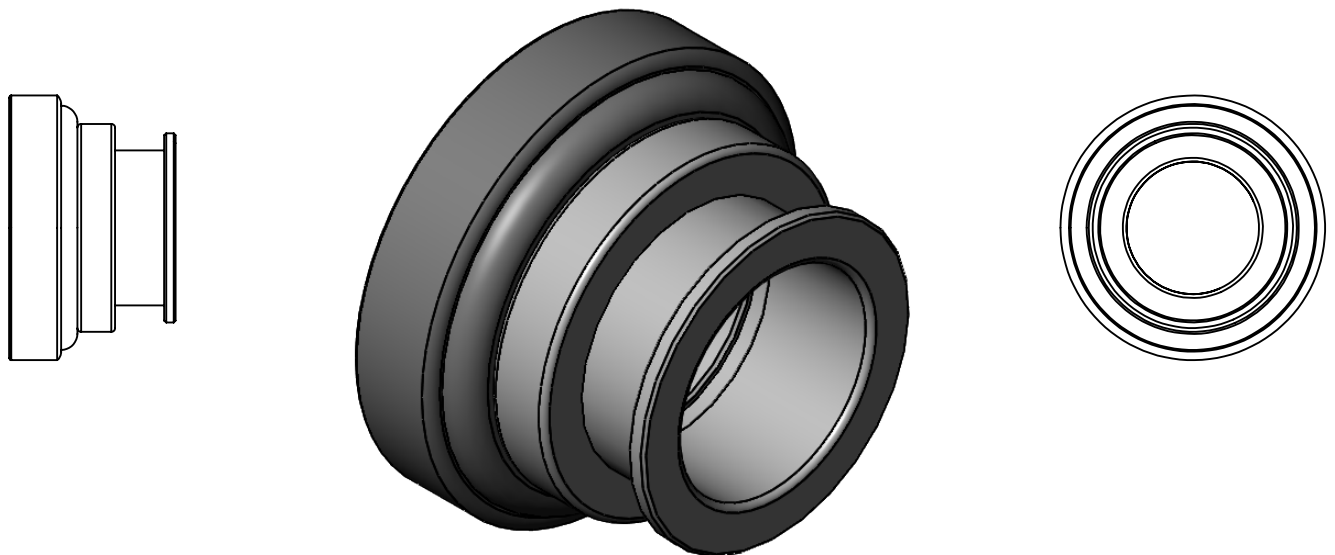


CLUTCH BEARING INFO



CABLE TYPE CARRIER DOES NOT REQ A REAR SHOULDER FOR USE .
THIS IS A CABLE TYPE CARRIER ONLY .
FULL CABLE TYPE SET UP FROM PEDAL ARM TO CLUTCH ARM.
GMH WB AND COMMODORE VB-VK



HYDRAULIC / MECHANICAL CARRIER HAS A REAR SHOULDER .
THIS TYPE IS USED ONLY FOR RETURN SPRING SET UP ON FORK ARM
MUST NOT BE USED WITH CABLE SET UP.
FAILURE WILL OCCUR TO FORK ARM.
GMH PRE HZ AND EARLIER.

AN AIR GAP OF 3 TO 4 mm IS REQUIRED BETWEEN P/PLATE AND BEARING